
The 'Sense-It' Room will allow Therapists (Occupational, Physical, Speech and Recreational), schools, parents and other interested parties to utilize the Room either individually or with the trained staff from CLASP Homes.

In the Room clients are monitored to assess developmental levels and to determine whether sensory-motor processing is impaired; and if so propose activities (therapy) to help combat these impairments as best as possible. Many times the therapists will work with the families to replicate the training in their natural environment.

The trained staff supervising the Room, run the therapy activities that to many look like play. These activities are carefully selected and disguised as play because it is the most effective way of learning and developing skills and growth in deficient areas.

Here are some possible signs that an individual may have SI disorder: Avoiding touch, over-reacting to touch, inability to identify objects by touch, spinning, hand flapping and head bagging, biting, poor eye contact, short attention span, distractibility and hyperactivity, clumsiness and lack of balance, fear of movement, outburst, difficulty using both sides of the body, repetitive speech, slow speech, behavior problems, raised shoulders and poor gross and fine motor skills.

Offered by CLASP Homes Inc.
With the generous support of the
Greater Bridgeport Area Foundation
and First County Bank Foundation



CLASP Homes' "SENSE-IT"



Sensory Integration Room

Offered by CLASP Homes, Inc.
with the generous support of the
Greater Bridgeport Area Foundation
and the First County Bank Foundation.



HOURS OF OPERATION

With a reservation:

**Tuesday and Thursday
8:00-11:00 AM**

**Tuesday, Wednesday and Thursday
4:00-7:00 PM**

Additional hours by appointment only.

FEE SCHEDULE

With a CLASP trained supervisor:
\$25 per half hour
\$50 per hour

**RESERVE 5 SESSIONS
GET 1 FREE**

**RESERVE 10 SESSIONS
GET 2 FREE**

Therapists:

\$40 per hour

RESERVE ROOM FOR 3 MONTHS
\$30 per hour

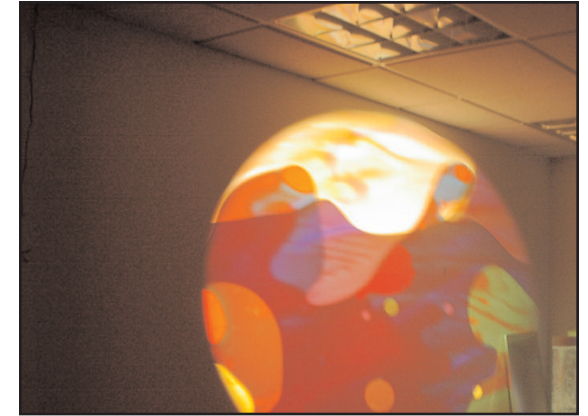
RESERVE ROOM FOR 4 MONTHS
\$20 per hour

Payment Options:

Cash
Check
Credit Card

3% processing fee for credit cards

**A 24 HOUR CANCELLATION IS REQUIRED OR
YOU WILL BE RESPONSIBLE FOR PAYMENT**



TO MAKE YOUR RESERVATION CONTACT

**Patty Richards
(203) 226-7895 X123**